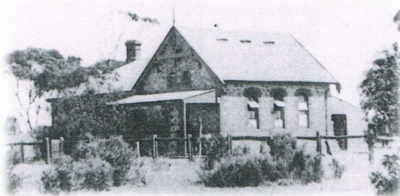


7. DUBLIN SCHOOL :- A school and residence were built at Dublin in 1881. The school was classed as a "Provisional". 25 children were instructed during that year - the school was open 54 days, and the teacher was William Moore. In 1882, it was classed as a "Public School". There were 48 pupils and the teacher was William Hayes. Combined Sports Days were held against Windsor and Long Plains schools at Port Parham for many years until 1968 when they were held at the Dublin oval. In 1971, the school, along with Windsor and Long Plains, was closed. children now go to Mallala Primary and Balaklava High schools by bus each day.



8. WATER in DUBLIN :- First Street. Built around 1885 on Government land. The stone construction is the remnants of the water tank used for the town water and for stock being driven to market. The water was of good quality which was instrumental in the growth of the town. Mains water was connected to residents in December 1910. Recently it has been restored to preserve its history by the Dublin History Group.



9. DUBLIN CEMETERY :- 1876 - The District Council of Dublin decided on the 30th October that a cemetery be "laid out". It has been used in numerous film locations over the years



2a Wasleys Road

PO Box 18

MALLALA

SA 5502

www.apc.sa.gov.au

Email: info@apc.sa.gov.au

**DUBLIN HISTORY GROUP
DUBLIN INSTITUTE
9 SIXTH STREET
corner of First and Sixth Street, DUBLIN**

EMAIL - info@dublinhistorygroup.com.au

PO Box 60, DUBLIN, SA 5501

www.dublinhistorygroup.com.au/page/home.htm



WALKING TOUR

of

DUBLIN

South Australia



Gazetted as the Town of DUBLIN 13th April 1876 in the District Council of Dublin 1873-1936, it was the central Administrative and Supply hub in the area situated along the main Adelaide to Wallaroo Road. Situated now, on Highway One, 61 kilometres (38 mi) north of the state capital, Adelaide. The town is surrounded by farmland and rural industry the area is home to a growing commuter population. At the 2021 census, Dublin had a population of 405.

Dublin is in the federal Division of Grey, the state

PRODUCED BY THE DUBLIN HISTORY GROUP 2026

As part of the 150th Anniversary of Dublin, this free walk-about (and drive) History Walk has been produced to showcase features in the area. It is a work in progress and is in such a format that it can and will be updated as we progress. The information listed here is basic in content, but with the use of the QR Code, this will provide more detail and pictures than can be provided on this brochure.

Thank you for your interest. We hope you gain a little insight to the area. If you find you would like to contribute to this exercise feel free to email the Dublin History Group at info@dublinhistorygroup.com.au

1. GENERAL STORE :- Old Port Wakefield Road (Main Street)

First Land Owner, Mr. Burney Young, October 1873 The first public telephone service was opened in 1883 in the Dublin General Store. Upgrades were made over the years until the exchange was closed in 1979, transferring to the automatic facility at Windsor. The Dublin General Store remains the Hub of the area today.



2. DUBLIN HOTEL :- Old Pt Wakefield Road (Main Street) Reputedly being the first building in the town of Dublin



3. SCHLODDER SHELTER :- Lot 75 Old Port Wakefield Road, (Main Street), The land was donated to the CFS by Mr. Milton Schlodder in 1967 for the establishment of the first EFS Station. A shelter for travelers was built in 1997 after the CFS moved to their new purpose built facility. The shelter was re-built April 2015 with tiles featured by the community



4. LIONS PARK :- Main Street Second Street. *The Dublin Lions Park was created from the gravel site left behind by the Highways Department and built by the newly formed Mallala & Districts Lions Club. It was opened on 6th May 1984, by John Meier MP*



5. DUBLIN METHODIST CHURCH :- Location: Lot 51, 13 Sixth Street
Build Information: Six Foundation Stones Laid: 10th/12th October 1880 by Mesdames W. Crosby, Job Prime, J. Porter, G. H. Lindsay, Miss Martin and Miss Forbes. Opened: 16th/17th January 1881 by the Rev. Clark, of Victoria, who was visiting South Australia at the time. Kindergarten & Sunday School Hall Opened 9th August 1920 by Rev. W. A. Potts President of the Methodist Conference. It was closed in 1967, became a storehouse for the local roadhouse, then sold again, becoming a private residence.



6. DUBLIN INSTITUTE :-

Location 9 Sixth Street Dublin or Lot No: 53
Original building built in 1884 By Mr O'Hara
Material Limestone local stone carted by Mr Carrier
Size 52' long 30' wide and 16' high. Currently it is the property of the Adelaide Plains Council and is the home of the Dublin History Group

